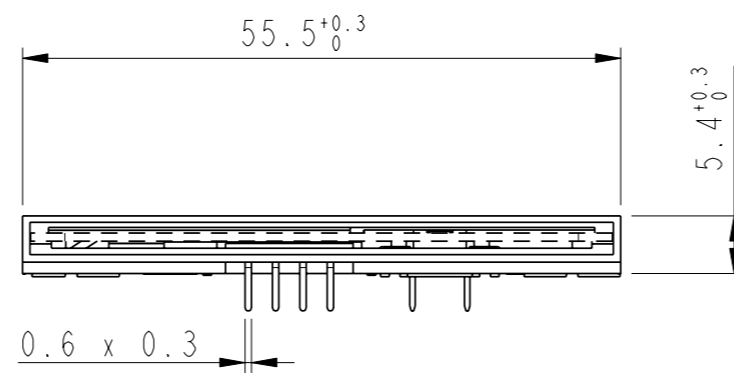
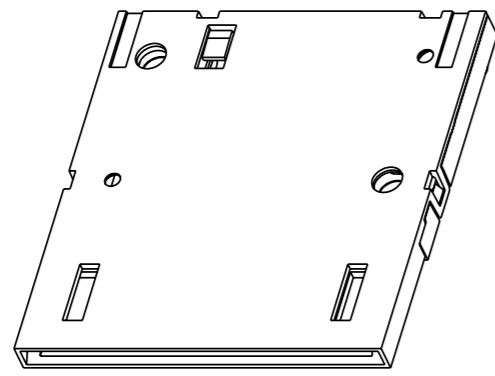


PART NUMBER	LEAD FREE VERSION
7431E0525S01	7431E0525S01LF



**GENERAL :**  
 High cycle life duration smart card connector with landing type contacts mechanism. The landing type connector also provides the feature of recessed contacts when card is not inserted which protects them against vandalism.  
 Smart card for reference purposes only.

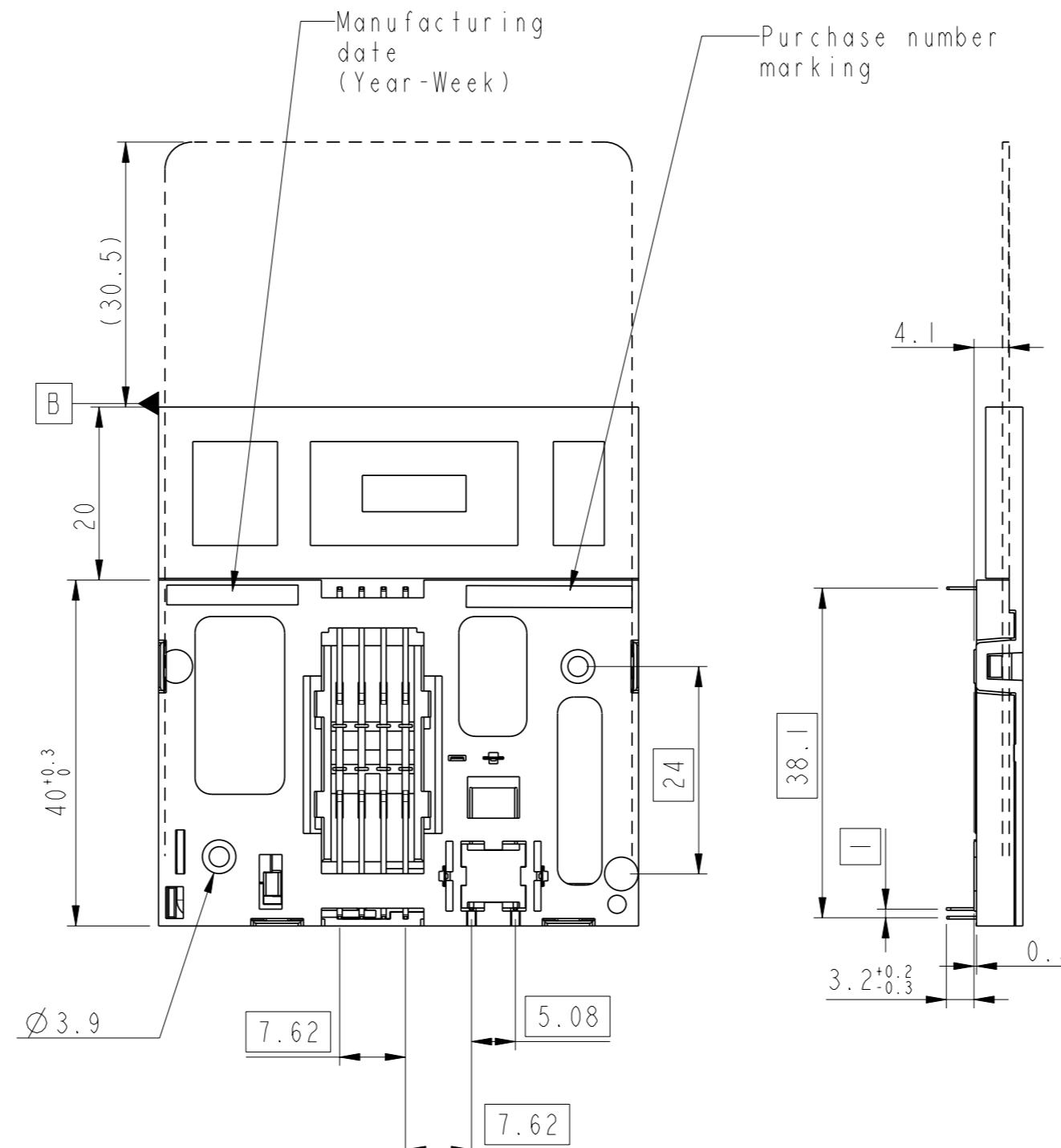
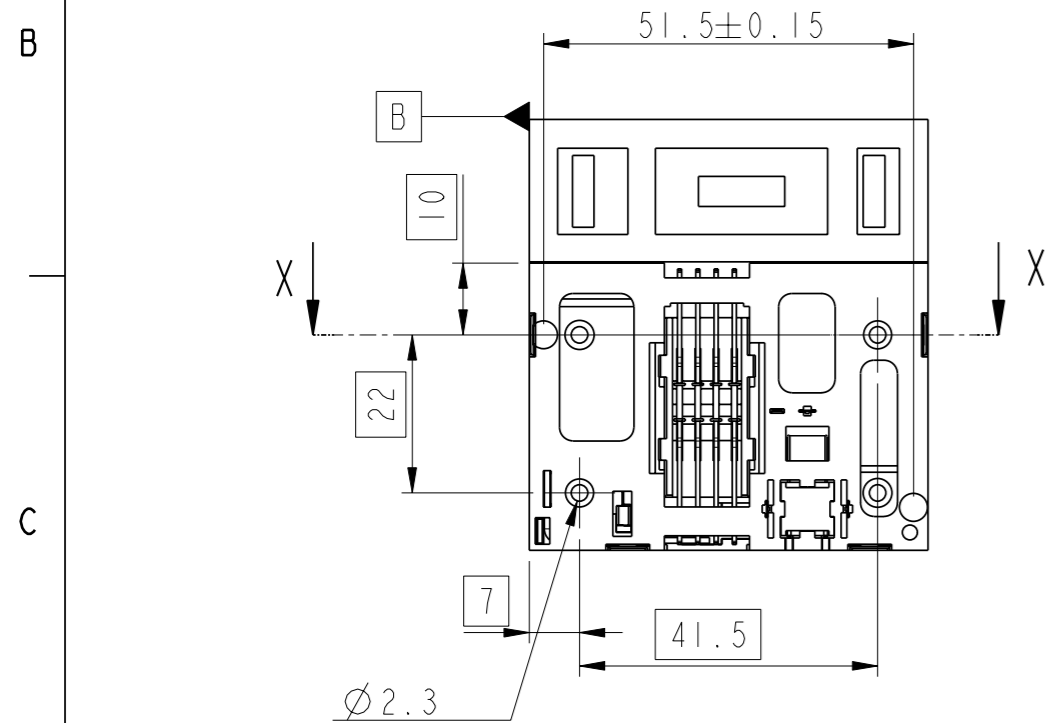
**ELECTRICAL PROPERTIES:**  
 Insulation resistance : > 1000MΩ  
 Dielectric withstanding voltage : >750 Vrms  
 Current carrying capacity : Min 10μA, Max 1A  
 Contact resistance : < 100mΩ

**MECHANICAL PROPERTIES :**  
 Operating force : Insertion : F < 10N  
 Withdrawal : 1 < F < 10N  
 Contact Normal force : 0.2 < F < 0.3 for 0.6mm of deflection  
 Durability : 200 000 mating cycles

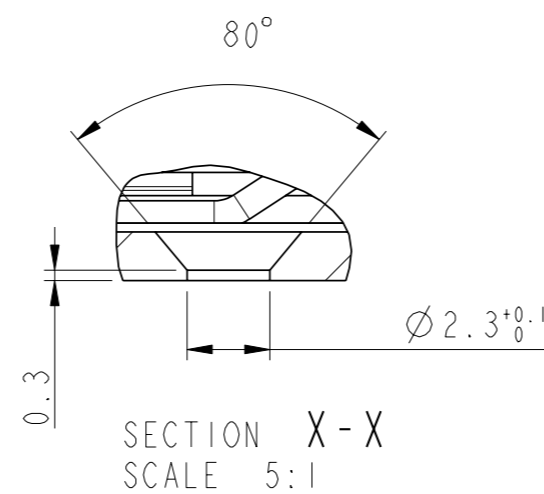
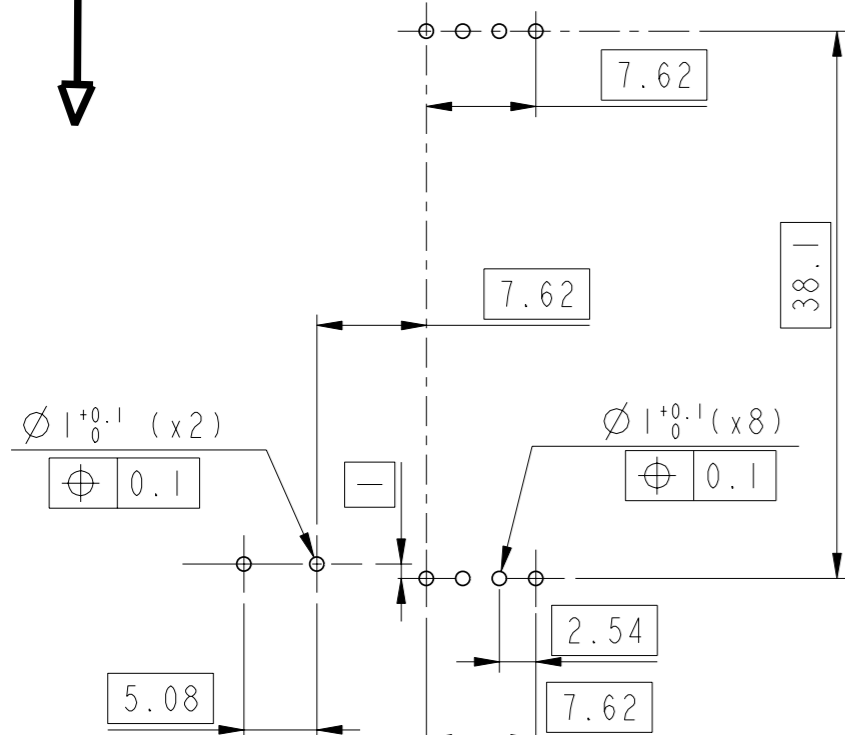
**MATERIAL :**  
 Head reader : High temp. Thermoplastic, Colour Black, Rated UL94V0  
 Cover : Thermoplastic, Colour Black, Rated UL94V0  
 Contacts : Copper alloy,  
 Plating : 2.5μm Nickel min. all over  
 2μm Gold min. on contact area  
 3μm SnPb(60/40) min. on solder tails (FOR LEADED VERSION)  
 3μm matte tin min. on solder tails (FOR LEAD FREE VERSION)

**ENVIRONMENT :**  
 Operating temperature : -40°C / +85°C  
 Climatic conditions : UTE 93-421

**PACKAGING :**  
 Plastic cavity tray



Card insertion direction  
 Recommended PCB Layout  
 (Component side)



LEAD FREE VERSION:

"This product meets European Union Directives and other country regulations as described in GS-22-008"

The housing will withstand exposure to 260°C peak temperature for 3-5seconds in a wave solder application with a 1.6mm minimum thick circuit board.

rev	ecn no	dr	date
A	F20307	DLE	02/04/29
B	F20341	DLE	02/06/04
C	LS3088	JTA	03/11/28
D	105-0176	NT	05/09/29-
E	105-0078	DTK	'06/06/19
-	-	-	-
-	-	-	-

General Tolerances	
0 to 10mm:	±0.1mm
10 to 30mm:	±0.15mm
30 to 60mm:	±0.2mm
60 and more:	±0.3mm

www.fciconnect.com		surface -	tolerance std	projection	mm
		ISO 1302	ISO 406 ISO 1101	ANGULAR	Scale
		TOLERANCES UNLESS OTHERWISE SPECIFIED			1:1
Dr	D LEGRAND	02/04/29	0.x	±	size
Eng	F TISSERAND	02/04/29	0.xx	±	A2
Chr	DILIP THOMAS	'06/06/19	0.xxx	±	ECN
Appr	K.V SIVADAS	'06/06/19	Product family		105-0078
					Spec ref
FCI		E05 WITHOUT PEG		dwg no	Rev.
				VJW53908	E
catalog no				sheet 1 of 1	

Copyright FCI. FCI

REV F - 2006-04-13